

PMU Customer Training Catalog



Power Management University
pmutraining.com

PMU
TRAINING CENTER

Power Management University (PMU)

About us

PMU is the US based education team dedicated to providing best-in-class training on the various Electrical Power Monitoring System (EPMS) software and related products Schneider Electric has to offer.



Our Students

PMU offers courses that benefit end users, partners and even service roles within the energy segment, such as Energy Managers, Facility Technicians, Site Engineers and Utility Workers.

Our Specialty

PMU offers training on the following EPMS software and hardware:

EPMS Software:

- EcoStruxure™ Power Monitoring Expert (PME)
- EcoStruxure™ Power Operation (EPO)
- PowerLogic™ ION Setup Software

PowerLogic™ and ION Meters

- ION9000 • PM8000 • PM800 • EM4900
- ION8650 • PM5000 • CM4000 • EM4200
- ION7400 • PM3000 • HDPM6000 • EM3500

Communication Devices:

- EcoStruxure™ Panel Server • Com'X
- EcoStruxure™ Site Server • EGX
- Enerlin'X



Table of Contents

Factory PMU Training 4

What is Factory PMU Training? 5

Factory Training Options 6-12

EcoStruxure™ PME – Operator Training 6

EcoStruxure™ PME – Advanced Operator Training 7

EcoStruxure™ PME – ION Architecture Programming using Designer 8

EcoStruxure™ PME – Energy Billing Module Deployment 9

EcoStruxure™ PME – TGML Graphics Editor & User Diagrams 10

EcoStruxure™ PME – VISTA Graphics Editor & User Diagrams 11

PowerLogic™ & ION Metering Hardware – Installation & Troubleshooting 12

How to Register for Factory Training 13 – 18

Private PMU Training 19

What is Private PMU Training? 20

Planning a Private PMU Training Event 21

EcoStruxure™ PME Event Builder 22

EcoStruxure™ EPO Event Builder 23

PowerLogic™ & ION Metering Hardware Event Builder 24

Requesting a Quote 25



Factory PMU Training



PMU Factory Training Defined

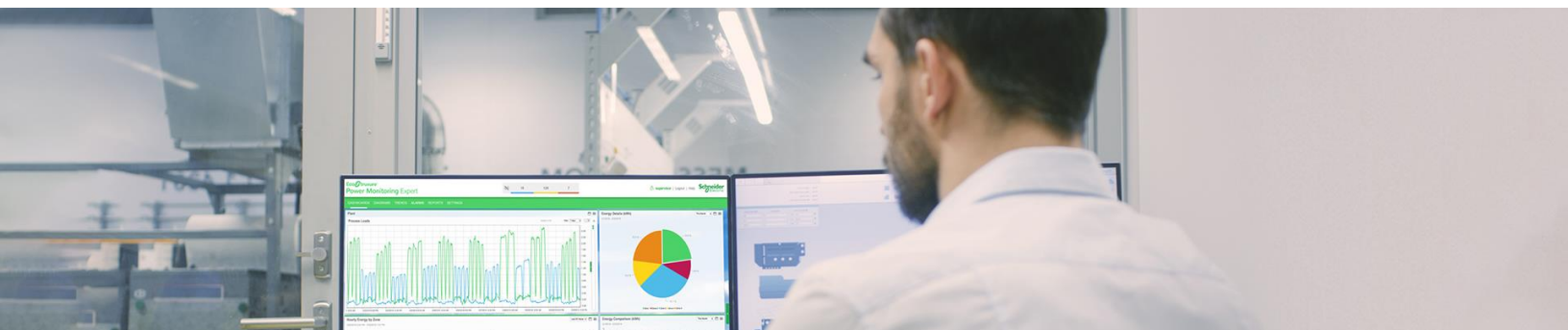
PMU Factory Training courses are Instructor-led events with pre-defined agendas hosted on specific dates throughout the year that are available for registration by anyone interested.

Students will learn various EPMS topics through a series of presentations and demonstrations, followed by extensive hands-on practice via guided lab exercises.



Made possible by our state-of-the-art training room, each student will be assigned their own dedicated training lab station providing them full access to our EPMS software and hardware.

With both in-person and virtual options available, a **PMU Factory Training** course is a perfect option for our customers with a minimum number of attendees that are looking for standardized training on their EPMS system.



EcoStruxure™ Power Monitoring Expert (PME)

Operator Training (PMEOT100)

Description:

This 3-day instructor-led course focuses on providing an introduction into the PME software. Through a series of presentations and hands-on lab exercises, students will learn the general capabilities of the software, with a focus on day-to-day operational tasks within the web application such as Dashboards, Trends, Alarms, Reports, Device and User Management. Students will also receive an overview of basic EPMS and power fundamental topics including terminology, utility billing and meter selection and basic communications.



Audience:

This course is designed as an entry level training and is recommended for anyone that is or will become involved with using this software as part of their day-to-day role.

Course Details:

Duration:

- 3-Days

Delivery Options:

- Classroom (CR)
- Virtual Instructor-Led (VILT)

Part Numbers (SKUs):

- (CR) 3000PMU3DAY
- (VILT) 3000PMUWEB3DAY

Prerequisites:

- None

Students will be provided:

- Course material including presentations, labs, etc.
- Access to demo software & hardware
- Certificate of completion
- CEUs: 1.8

Agenda:

Day 1	Day 2	Day 3
Intro to PME Software	Adding & Managing Native Devices	Viewing & Creating Dashboards
Intro to Web Client	Viewing & Navigating Diagrams	Viewing & Creating Trends
Intro to User Management	Intro to Power Fundamentals & Utility Bills	Viewing & Creating Reports
Intro to Device Types		Viewing & Managing Alarms

Registration:

[Click here](#) to view available dates and to register for this course, or visit pmutraining.com

This course typically runs **Tuesday – Thursday, 9am – 4pm (CT)** unless otherwise noted during the registration process.

Question? Email pmu@se.com

EcoStruxure™ Power Monitoring Expert (PME)

Advanced Operator Training (PMEAOT200)

Description:

Formerly known as Administration & Maintenance, this 3-day instructor-led course focuses on teaching students how to manage and maintain a PME system. Through a series of presentations and hands-on lab exercises, students will learn the design of a PME system as well as how to maintain it by adding connected devices, building meter hierarchies, and creating custom graphics screens to accurately represent a system. The course will also cover integrating PME with 3rd party hardware, as well as database management, system maintenance, backup and disaster recovery planning.



Audience:

This course is designed for anyone who is responsible for administering, maintaining, and/or supporting a PME system, such as system administrators, IT Admins, and advanced PME users.

Course Details:

Duration:

- 3-Days

Delivery Options:

- Classroom (CR)
- Virtual Instructor-Led (VILT)

Part Numbers (SKUs):

- (CR) 3000PMU3DAY
- (VILT) 3000PMUWEB3DAY

Prerequisites:

- Basic familiarity with PME
- Basic familiarity with Microsoft Windows operating systems
- Basic familiarity with power and energy topics & terms

Students will be provided:

- Course material including presentations, labs, etc.
- Access to demo software & hardware
- Certificate of completion
- CEUs: 1.8

Agenda:

Day 1	Day 2	Day 3
Introduction to PME Software	Hierarchies	Database Structure
Introduction to Engineering Clients	Diagrams & TGML Graphics Editor	System Troubleshooting
Management Console	3rd Party Device Integration	Disaster Recovery
Logical Devices		

Registration:

[Click here](#) to view available dates and to register for this course, or visit pmutraining.com

This course typically runs **Tuesday – Thursday, 9am – 4pm (CT)** unless otherwise noted during the registration process.

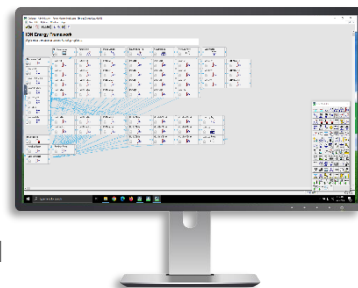
Question? Email pmu@se.com

EcoStruxure™ Power Monitoring Expert (PME)

ION Architecture Programming using Designer (PMEIONPROG300)

Description:

Formerly known as Advanced Programming, this 4-day instructor-led course focuses on system and device level customization using the Designer Application in PME. Through a series of presentations and hands-on lab exercises, students will learn the architecture of ION meters, as well as how to create custom programs for equipment monitoring, alarming, and logging. They will also learn the Virtual ION Processor (VIP) for programming Modbus meters and 3rd party equipment. PME Designer and TGML Graphics Editor will also be covered, as well an overview of how programs can be used in PME's graphic screens. Students will create multiple frameworks for integrating WAGES devices, control and process applications, logging, alarming, and custom calculations.



Audience:

This course is intended for meter/instrumentation technicians, system engineers, and system integrators who need to learn how to get the most out of their PME software and associated meters.

Course Details:

Duration:

- 4-Days

Delivery Options:

- Classroom (CR)
- Virtual Instructor-Led (VILT)

Product Numbers (SKUs):

- (CR) 3000PMU4DAY
- (VILT) 3000PMUWEB4DAY

Prerequisites:

- Basic familiarity with PME
- Basic familiarity with Microsoft Windows operating systems
- Basic familiarity with power and energy topics & terms

Students will be provided:

- Course material including presentations, labs, etc.
- Access to demo software & hardware
- Certificate of completion
- CEUs: 2.4

Agenda:

Day 1	Day 2	Day 3	Day 4
ION Architecture & ION Modules	TGML & Designer Integration	Clock Module	Setpoint Module
Designer Navigation & Interface	Counter Module	Periodic Timer Module	Digital I/O
ION Meter Back-up & Restore	Arithmetic Module	Data Logging Framework	Modbus Mastering

Registration:

[Click here](#) to view available dates and to register for this course, or visit pmutraining.com

This course typically runs **Monday – Thursday, 9am – 4pm (CT)** unless otherwise noted during the registration process.

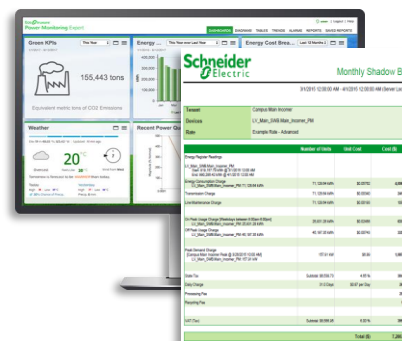
Question? Email pmu@se.com

EcoStruxure™ Power Monitoring Expert (PME)

Energy Billing Module Deployment (PMEBILLMOD)

Description:

This 1-day instructor-led course focuses specifically on the Energy Billing Module, which is one of the most common add-on features of PME. This optional module is used to develop accurate, complex energy bills using data collected in PME's database. This module can be used for utility bill verification, load cost analysis, or even tenant billing. Students will learn how to develop advanced rate schedules using both the XML billing templates as well as the Time of Use (TOU) Editor. They will then learn how to generate these reports based on these rates.



Audience:

Anyone who has a need to deploy and configure the Energy Billing Module. While the focus is on system integrators, this may also include experienced engineers who need to configure or modify the usage of this module.

Course Details:

Duration:

- 1-Day

Delivery Options:

- Virtual Instructor-Led (VILT)

Product Number (SKU):

- 3000PMUWEB1DAY

Prerequisites:

- Basic familiarity with PME, including meter hierarchy configuration
- Basic familiarity with Microsoft Windows operating systems
- Basic familiarity of utility billing rate terms

Students will be provided:

- Course material including presentations, labs, etc.
- Access to demo software for hands on lab assignments
- Certificate of completion
- CEUs: 0.6

Agenda:

1-day Agenda

Billing Reports Templates Overview

Billing Module Hierarchy

Utility Rate & Rate Schedule Files

Tiered Demand Rate Structures

Time-of-Use (TOU)

IT & Managed Circuits

Registration:

[Click here](#) to view available dates and to register for this course, or visit pmutrainig.com

This course typically runs **9am – 4pm (CT)** unless otherwise noted during the registration process.

Question? Email pmu@se.com

EcoStruxure™ Power Monitoring Expert (PME)

TGML Graphics & User Diagrams (PMETGML)

Description:

This 1-day instructor-led course focuses on teaching students how to create, modify, and manage PME User Diagrams using the new graphics editor tool called TGML. Made available as part of the PME2023 release, this tool will eventually replace the legacy Vista graphics tool. It uses a more advanced XML-based TAC Graphics Markup Language (TGML) format for dynamic 2D Graphics, which is the same language many other Schneider software applications use, such as EcoStruxure Power Operation (EPO) and EcoStruxure Building Operations (EBO). User Diagrams allow PME users to display real-time and historical data, monitor events and alarms, and control a variety of system functions within the PME web client. Students will learn how to use this new TGML tool through a series of presentations and hands-on lab exercises.



Audience:

This course is designed for anyone interested in learning how to create, modify and manage User Diagrams within the PME web client using the new TGML graphics editor tool.

Course Details:

Duration:

- 1-Day

Delivery Options:

- Virtual Instructor-Led (VILT)

Product Number (SKU):

- 3000PMUWEB1DAY

Prerequisites:

- Basic familiarity with PME
- Basic familiarity with Microsoft Windows operating systems

Students will be provided:

- Course material including presentations, labs, etc.
- Access to demo software for hands on lab assignments
- Certificate of completion
- CEUs: 0.6

Agenda:

This course typically runs **9am – 4pm (CT)** unless otherwise noted during the registration process.

1-day Agenda

TGML Overview

Drawing Tools, Objects & Properties

Components & Binding

Groups, Arrange, Layers & Snippets

Building a One-line

Applying TGML Graphics to PME User Diagrams

Registration:

[Click here](#) to view available dates and to register for this course, or visit pmutrainig.com

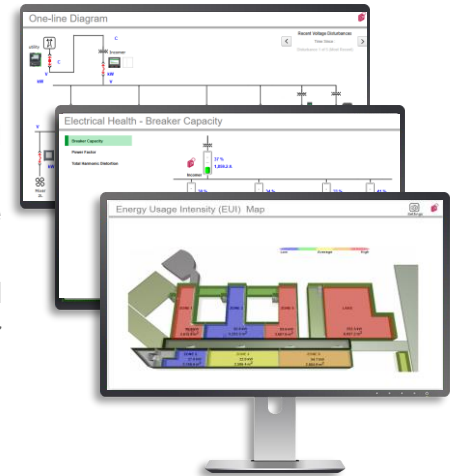
Question? Email pmu@se.com

EcoStruxure™ Power Monitoring Expert (PME)

Vista Graphics & User Diagrams (PMEVISTA)

Description:

This 1-day instructor-led course focuses on teaching students how to create, modify and manage PME User Diagrams using the legacy graphics editor tool called Vista. User Diagrams allow PME to display real-time and historical data, monitor events and alarms, and control a variety of system functions within the web client. Through a series of presentations and hands-on lab exercises, students will learn how to use the Vista engineering client to modify and troubleshoot existing Vista User Diagrams, as well as create new custom User Diagrams.



Audience:

This course is designed for anyone interested in learning how to create, modify and manage User Diagrams within the PME web client using the legacy Vista graphics editor tool.

Course Details:

Duration:

- 1-Day

Delivery Options:

- Virtual Instructor-Led (VILT)

Product Number (SKU):

- 3000PMUWEB1DAY

Prerequisites:

- Basic familiarity with PME
- Basic familiarity with Microsoft Windows operating systems

Students will be provided:

- Course material including presentations, labs, etc.
- Access to demo software for hands on lab assignments
- Certificate of completion
- CEUs: 0.6

Agenda:

1-day Agenda

Vista Overview

How to edit and modify Vista screens

How to create custom Vista screens

How Vista screens are used in the web client application Diagrams

Registration:

[Click here](#) to view available dates and to register for this course, or visit pmutraining.com

This course typically runs **9am – 4pm (CT)** unless otherwise noted during the registration process.

Question? Email pmu@se.com

PowerLogic™ & ION Metering Hardware

Installation & Troubleshooting (PLIONMETER)

Description:

This 2-day instructor-led course focuses on the installation, setup, and troubleshooting of PowerLogic™ and ION meters as well as associated communication devices. Through a series of instructor-led presentations and hands-on lab exercises, students will learn specific meter capabilities for proper placement throughout a facility. Participants will also learn how to correctly configure these devices using the ION Setup software. Meter display navigation to identify and resolve issues related to configuration, wiring, or network communications will also be covered.



Audience:

This course is designed for meter technicians, system engineers, energy managers and facility personnel who already have or plan to install Schneider Electric PowerLogic™ and/or ION meters and communication devices.

Course Details:

Duration:

- 2-Days

Delivery Type:

- Classroom (CR)

Product Number (SKU):

- 3000PMU2DAY

Prerequisites:

- Basic computer skills and experience with Microsoft Windows
- Working knowledge and understanding of electrical terminology, concepts and calculations, including an understanding of the relationships among current, voltage, power and power factor in three-phase circuits

Students will be provided:

- Course material including presentations, labs, etc.
- Access to demo hardware and software for hands-on lab assignments
- Certificate of completion
- 1.2 CEU's

Registration:

[Click here](#) to view available dates and to register for this course, or visit pmutrainig.com

Agenda:

Day 1	Day 2
Introduction to ION and PowerLogic Meters	ION Setup
Front Panel Navigation	CT / PT Wiring & Troubleshooting
Meter Communications	Communications Wiring & Troubleshooting

This course typically runs Tuesday – Wednesday, or Thursday-Friday, **9am – 4pm (CST)** unless otherwise noted during the registration process.

Question? Email pmu@se.com

How to Register for Factory PMU Training

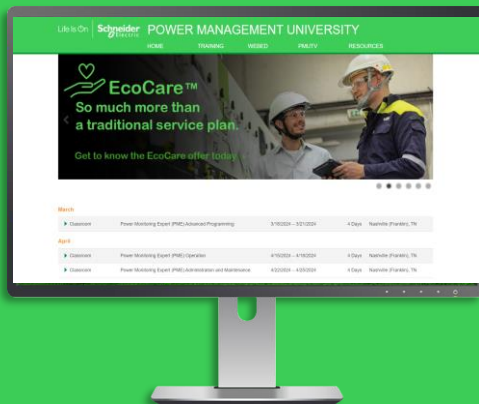
The following job aid provides guidance on how to register for a **Factory PMU Training Course**. These steps are required for each student planning to attend.

If you plan on purchasing your seat via a PO, proceed to page 18 for instructions on how to request a formal sales quote before proceeding with these steps.

1

Navigate to the appropriate **PMU Training Portal** as indicated below.

pmutraining.com



Standard Users

pmutraining.com/pmuplus



PMU+ Users

2

Login with your existing **Student Number** or create a new **Student Account**.

- Your uniquely assigned **Student Number** will appear on the final confirmation page upon submitting your information. It will also be **sent to the email address provided** during Student Account creation.
- If you have **forgotten your Student Number**, you can retrieve it by clicking on “Forgot Student Number” and providing your email address.
- If your original email address has changed and you can no longer receive emails at that address, please email pmu@se.com for assistance.

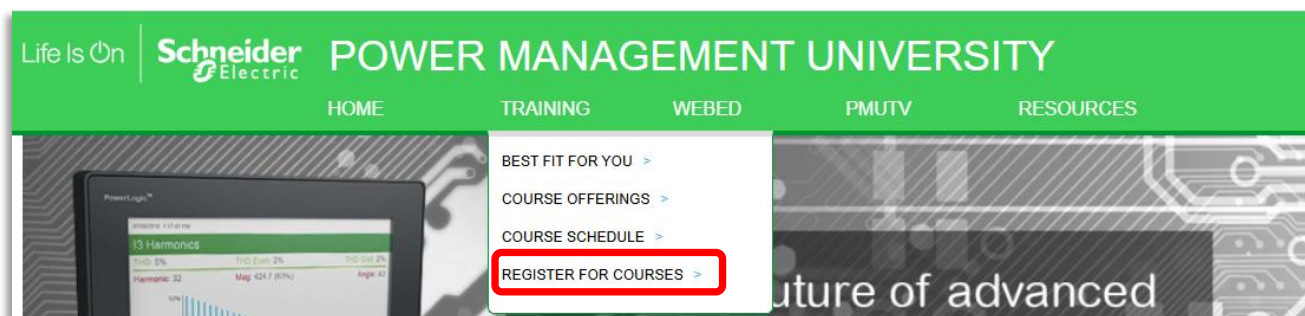
A screenshot of a login form for the Student Number. It features a label 'Student Number:' followed by a white input field. Below the input field is a blue button with the text 'LOG IN'. Underneath the button are two green links: 'NEW STUDENT ACCOUNT' and 'FORGOT STUDENT NUMBER'.

How to Register for Factory PMU Training

Continued.....

3

Navigate to the **Register for Courses** section within the Training tab.



4

Locate the course you wish to attend by using either the **filter option** at the top of this page, or the **list view** of all upcoming scheduled events, then click **REGISTER**.

REGISTER FOR COURSES

Use the form below to search for PMU courses.
Simply select the desired option(s) from the drop down boxes and click "Search".

Product: -- all products --

Course: -- all courses --

Location: -- all locations --

Date: -- any date --

SEARCH

Product
Course
Date
Register

PayPal
MasterCard VISA DISCOVER

[Read Payment FAQ's](#)

Classroom Training

Delivery Type	Class Name	Location	Start Date	End Date	Price	Details	Action	Logistics
VILT	Power Monitoring Expert (PME) Operation	Virtual Classroom	12/9/2024	12/12/2024	Web Price: \$4,262.29		CLASS FULL	
VILT	EcoStruxure Power Monitoring Expert (PME) - Operator Training	Virtual Classroom	2/4/2025	2/6/2025	Web Price: \$2,635.64		REGISTER	
Classroom	PowerLogic & ION Metering Hardware - Installation and Troubleshooting (2 Day)	Nashville (Franklin), TN	3/11/2025	3/12/2025	Web Price: \$2,477.40		REGISTER	
Classroom	PowerLogic & ION Metering Hardware - Installation and Troubleshooting (2 Day)	Nashville (Franklin), TN	3/13/2025	3/14/2025	Web Price: \$2,477.40		REGISTER	

How to Register for Factory PMU Training

Continued.....

5

Begin by reading through and agreeing to PMU's Factory Training Terms and Conditions.

future PMU training offer.

Cancellation Charges for Web-Based Training Classes:

On-Demand Campus (ODC) Subscriptions

PMU+ Subscriptions

Custom Education Portals

No refunds are offered for subscription-based training once access has been activated.

☒ I agree with all Terms and Conditions.

6

Validate the course and contact information and select "Proceed with Registration".

Please confirm the following information:

Your Name: Jennifer Deafenbaugh

Your Student Number: je04808de

Your Company: ABC_TEST

*** Mobile Phone:** 555-555-5555

Course Registering For: PowerLogic and ION Metering Hardware - Installation and Troubleshooting (4 Day) - 3000PMUHW250

Location: Nashville (Franklin), TN

Date(s): 5/6/2024 - 5/9/2024

Web Price: \$4,999.05

Enter Discount Code (if applicable):

The Above Information Is Correct - Proceed With Registration

The Above Information Is NOT Correct - Log out and Return To Training Site

How to Register for Factory PMU Training

Continued.....

7

On the final screen, choose your **payment method** from the drop-down list, provide the required information for that option, then click on “**Submit**” at the bottom of the page. More details about each end-user payment method are provided below.

PAYMENT INFORMATION

Your Name: Jennifer Deafenbaugh

Your Company: ABC_TEST

Your Student Number: je04808de

Course Registering For: EcoStruxure Power Monitoring Expert (PME) - Operator Training - PMEOT100

Location: Virtual Classroom

Web Price: \$2,635.64

Subscription Credits: 3

Date(s): 2/4/2025 - 2/6/2025

Please fill out the form below to register for this course. A valid form of payment is required to register.

[Payment FAQs](#)

Course Payment Options:

Credit Card

– Please select an option –

Credit Card

PO Number

Prepaid Voucher

Schneider Electric employee

PMU+ Credits

are accepted. Subject to individual approval.

When Training at the PMU facility, we strongly recommend booking refundable airfare and lodging. Power responsible for any fees incurred for travel as a result of course changes or cancellations.

Submit

Back

1. **Credit Card** – Payments via Visa®, MasterCard®, or American Express® accepted. Subject to individual approval.
2. **PO Number** – This option requires both a Sales Quote # and Purchase Order # or Sales Order # to be entered. Guidance on getting a formal quote is provided on the next page.
3. **Prepaid Voucher** – Vouchers may have a “V” or “PP” prefix., Example: PPV4-0117-9RN93863MU674735N
4. **PMU+ Credits** – Only available for use by customers with an active PMU+ Education Subscription.

How to Register for Factory PMU Training


Continued.....

8

Once the registration has been submitted, you will receive an email from NoReply@verified.se.com advising you of your registration status. Depending on the payment method selected, the email will indicate one of the following:

Registration Received

Your PMU Registration Has Been Received

 NoReply.PMU@verified.se.com
To ✓ ron.zolkower@se.com


Thank you, your registration has been received. Please review the following information:

Course: EcoStruxure Power Monitoring Expert (PME) - Operator Training
Date(s): 12/9/2025 - 12/11/2025
Location: Virtual Classroom

Your registration has been received but your seat is **NOT confirmed** until the PO information can be validated.

Registration Confirmation

Registration Confirmation

 NoReply.PMU@verified.se.com
To ✓ ron.zolkower@se.com

Welcome Ron Zolkower to Power Management University training.

Please review the following information in its entirety.

Congratulations! Your payment has been arranged and your seat in

Your registration has been received, and your seat is **confirmed!** For classroom events, this email will also contain course logistical information so you can plan travel.

9

In addition to the registration confirmation, you will also receive an email from pmu@se.com 1-2 weeks before the scheduled event. This email will include a reminder about the course details, links to course materials, as well as the official meeting invitation for virtual events.



Requesting a Quote for Factory PMU Training

To purchase Factory PMU Training via a PO, you must first contact the appropriate Digital Services sales team for a formal quote. Be sure to include the **course ID** as well as the **appropriate SKU** based on the delivery method of the course you wish to register for.

Submitting a PO for a Factory Training course **DOES NOT REGISTER** you for that training. Each student must individually register for each class they wish to attend following the instructions starting on page 13.



East Team: DSEast@se.com

Central Team: DSCentral@se.com

West Team: DSWest@se.com

Factory Course Name	Course ID#	Delivery Method & SKU
PME ₁ – Operator Training	PMEOT100	CR ₂ - 3000PMU3DAY VILT ₃ - 3000PMUWEB3DAY
PME ₁ – Advanced Operator Training	PMEAOT200	CR ₂ - 3000PMU3DAY VILT ₃ - 3000PMUWEB3DAY
PME ₁ – ION Architecture Programming using Designer	PMEIONPROG300	CR ₂ - 3000PMU4DAY VILT ₃ - 3000PMUWEB4DAY
PME ₁ – Billing Module	PMEBILLMOD	VILT ₃ - 3000PMUWEB1DAY
PME ₁ – TGML Graphics & User Diagrams	PMETGML	VILT ₃ - 3000PMUWEB1DAY
PME ₁ – VISTA Graphics & User Diagrams	PMEVISTA	VILT ₃ - 3000PMUWEB1DAY
PL ₄ & ION Metering Hardware – Installation & Troubleshooting	PLIONMETER	CR ₂ - 3000PMU2DAY

Private PMU Training



Private PMU Training Defined

Private PMU Training classes are instructor-led events that are dedicated to a specific end-user audience.

Agendas, dates, and delivery methods are developed and coordinated directly with our customers to create a custom event to support their EPMS training needs.



Students will learn about their specific EPMS system via instructor-led demos using their production software, however access to a training environment will be made available for safe hands-on learning.

Demo equipment available upon request.

With both in-person and virtual options available, a Private PMU Training event is a perfect option for a newly commissioned, upgraded, or staffed site that has several employees that require training on their Schneider EPMS system. It is also a great fit for geographically dispersed personnel that need consolidated training, or for those with a training budget but not a travel budget.



Planning a Private PMU Training

Planning a **Private PMU Training** event is as easy as 1, 2, 3!

Use the below steps to begin planning your event, then navigate to **page 25** to learn how to request a quote.

1

Agenda

All successful training events have a clearly defined agenda. Use the training event builders on the following pages to help confirm which topics are relevant for your system and staff. This will also help determine the estimated duration of the event.



2

Delivery

The next step is to confirm the desired delivery method of the event. Our Private Training events are delivered during normal business hours either **Onsite** at your facility, or **Virtually**.

Contact pmu@se.com if you would like PMU to host the event for you at our Nashville Training Hub, or if you require the training to be conducted outside of normal business hours.



3

Adders

Finally, there are a few Private Training event adders to consider, such as;

- **Videography Services** – Required if a recorded copy of the training event is needed.
- **Second Instructor** – May be required depending on class size or content requests.



EcoStruxure™ Power Monitoring Expert (PME)

- Private PMU Training Event Builder

Description:

The following page identifies the various topics that can be covered as part of a Private PMU Training event for a customer that has a Schneider Electric EPMS powered by EcoStruxure Power Monitoring Expert (PME).

How to use this document:

- Each topic listed below = 1 hour of training unless otherwise indicated
- 6 topics = 1-Day of training
- Topics have been grouped into suggested events but can be mix and matched
- Contact pmu@se.com to request topics not listed below



PME Training Topics:

Basic Operator Topics (1-Day)

- ☐ Introduction to the Web Application
- ☐ Dashboards & Trends
- ☐ Reports
- ☐ Alarms
- ☐ Device and User Diagrams
- ☐ Adding and Managing System Users & Native Devices

Advanced Operator Topics (1-Day)

- ☐ Introduction to Engineering Clients
- ☐ Management Console
- ☐ Adding Logical Devices & 3rd Party Device Integration
- ☐ Device Hierarchies
- ☐ Managing User Diagrams using Vista or TGML
- ☐ Database Structure, System Troubleshooting & Disaster Recovery.

Designer Application Topics (1-Day)

- ☐ Review ION Architecture, ION Module properties & the ION Reference Document
- ☐ Create, Back-up & Restore Meter Templates
- ☐ Build programs for input (I/O) metering
- ☐ Build programs for logging
- ☐ Build programs for alarming
- ☐ Build programs for custom calculations

Optional Add-on Modules

- ☐ Energy Billing Module & TOU Editor
- ☐ Event Notification Module
- ☐ Data Exchange Module
- ☐ Energy Analysis Dashboards
- ☐ Energy Analysis Reports Module
- ☐ Power Quality Performance Module
- ☐ Backup Power Module
- ☐ Breaker Performance Module
- ☐ Capacity Management Module
- ☐ Insulation Monitoring Module

Additional Topics

- ☐ Power Fundamentals
- ☐ Meter Training –Reference the Hardware event builder.
- ☐ Build programs to read Modbus registers from one device to an ION meter
- ☐ Program process and control applications inside of an ION meter
- ☐ Create & Manage Virtual Meters
- ☐ Diagnostics Viewer
- ☐ Disturbance Direction Detection
- ☐ Manual Data Editor

Question? Email pmu@se.com

EcoStruxure™ Power Operation (EPO)

- Private PMU Training Event Builder

Description:

The following page identifies the various topics that can be covered as part of a Private PMU Training event for a customer that has a Schneider Electric EPMS powered by EcoStruxure Power Operation (EPO). Advanced Reports & Dashboards topics are available if that module has been installed.



How to use this document:

- Each topic listed below = 1 hour of training unless otherwise indicated
- 6 topics = 1-Day of training
- Topics have been grouped into suggested events but can be mix and matched
- Contact pmu@se.com to request topics not listed below

EPO Training Topics:

Basic Operator Topics (1-Day)

- ☐ Introduction to the Web Application
- ☐ Navigate Real-Time Data and One-Line Diagrams
- ☐ View and Manage Alarms
- ☐ View and Manage Trends and Basic Reports

Advanced Operator Topics (1-Day)

- ☐ Review System Architecture
- ☐ Backup and Restore Projects and Data
- ☐ Manage EPO Users and Roles
- ☐ Add and Manage Devices via the I/O Device Manager
- ☐ Create and Manage Diagrams using Legacy Graphics Builder or new TGML Graphics Editor
- ☐ Modify One-Line Diagrams

Advanced Reports & Dashboards

- ☐ Create and manage Dashboards
- ☐ Create and manage Advanced Reports
- ☐ Review Database Structures and Maintenance Tasks
- ☐ Add and Manage Devices via the Management Console
- ☐ Configure Logical Devices
- ☐ Incorporate 3rd party devices into the PME software

Additional Topics:

- ☐ Meter Training – Reference the Hardware event builder.
- ☐ Designer Application Topics – Reference the PME event builder
- ☐ Optional Add-On Modules – Reference the PME event builder
- ☐ Power Fundamentals
- ☐ Create Modbus and ION Device Types and Profiles with Profile Editor
- ☐ Integrate IEC61850 Devices in EPO
- ☐ Integrate BACnet Devices in EPO
- ☐ Integrate SNMP Devices in EPO
- ☐ Integrate OPC-DA Sources in EPO
- ☐ Troubleshoot Communication Failures
- ☐ Troubleshoot Block Read Errors
- ☐ Create a One-Line Genie in Graphics Builder
- ☐ Create a One-Line Component in Graphics Editor
- ☐ Learn the Basics of Cicode
- ☐ Generate Summary Alarms in Cicode
- ☐ Extend TGML Graphics with JavaScript

Question? Email pmu@se.com

PowerLogic™ and ION Metering Hardware

- Private PMU Training Event Builder

Description:

The following page identifies the various topics that can be covered as part of a Private PMU Training event for a customer that has Schneider Electric meters and associated hardware.

How to use this document:

- Each topic listed below = 1 hour of training unless otherwise indicated
- 6 topics = 1-Day of training
- Topics have been grouped into suggested events but can be mix and matched
- Contact pmu@se.com to request topics not listed below



Supported Hardware:

PowerLogic™ and ION Meters

- ION9000 • PM8000 • PM800 • EM4900
- ION8650 • PM5000 • CM4000 • EM4200
- ION7400 • PM3000 • HDPM6000 • EM3500

Communication Devices:

- EcoStruxure™ Panel Server • Com'X
- EcoStruxure™ Site Server • EGX
- Enerlin'X

Hardware Training Topics:

Installation & Troubleshooting (1-Day)

- ☐ Introduction to ION and PowerLogic Meters
- ☐ Front Panel Navigation
- ☐ Meter Communications
- ☐ ION Setup Utility
- ☐ CT/PT Wiring & Troubleshooting
- ☐ Communications Wiring & Troubleshooting

Misc. Topics

- ☐ Power Fundamentals

Question? Email pmu@se.com

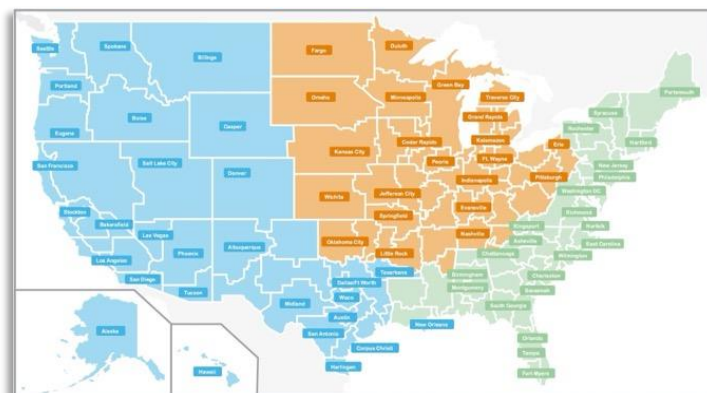
Requesting a Quote for Private PMU Training

Contact the appropriate Digital Services sales team to get a formal quote using the referenced part numbers.

East Team: DSEast@se.com

Central Team: DSCentral@se.com

West Team: DSWest@se.com



Onsite Events

SE Part Number	Description
3000PMUSITE1C	1-day standard onsite training event for up to 10 people during normal business hours. Includes one instructor and access to a training environment.
3000PMUSITE2C	2-day standard onsite training event for up to 10 people during normal business hours. Includes one instructor and access to a training environment.
3000PMUSITE3C	3-day standard onsite training event for up to 10 people during normal business hours. Includes one Instructor and access to a training environment.
3000PMUSITE4C	4-day standard onsite training event for up to 10 people during normal business hours. Includes one instructor and access to a training environment.
3000PMUCSITEVID	Videography Services per day of onsite training. Qty as needed.
3000PMUCSITE	Qty 1 additional instructor as needed for larger classes

Virtual Events

SE Part Number	Description
3000PMUCDVILT1DAY	1-day standard virtual training event for up to 10 people during normal business hours. Includes one instructor and access to a training environment.
3000PMUCDVILT2DAY	2-day standard virtual training event for up to 10 people during normal business hours. Includes one instructor and access to a training environment.
3000PMUCDVILT3DAY	3-day standard virtual training event for up to 10 people during normal business hours. Includes one instructor and access to a training environment.
3000PMUCDVILT4DAY	4-day standard virtual training event for up to 10 people during normal business hours. Includes one instructor and access to a training environment.
3000PMUCVILTVID	Videography Services per day of virtual training. Qty as needed.

Misc.

SE Part Number	Description
3000PMUCSITEPREP	1-day of instructor prep time as needed for custom content (Contact PMU for qty)



PMU
TRAINING CENTER